

XLURE® R.T. U. Multi-Species Beetle Trap

Multiple beetle pheromones & powerful, patented food lures...

The enclosed design remains effective even in dusty conditions.

All-around slit entry offers insects an attractive dark harbourage in which to seek sex, food & shelter.



Rough outer surface for ease of climbing.

Angled to encourage upward movement of the beetles.

Will not spill if accidentally kicked over.



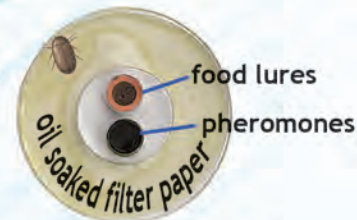
Attracts:

Cigarette Beetles
Foreign Grain Beetles
Saw Toothed Grain Beetles
Drug Store Beetles
Merchant Grain Beetles
Red & Confused Flour Beetles
Warehouse & Khapra Beetles
Lesser Grain Borers
Grain Weevils
Maize Weevils
Rice Weevils

HOW IT WORKS

Powerful, patented food lure attracts wide range of beetles, borers, weevils and their larvae. Proven pheromones further increase attractiveness. In the bottom of the cartridge is a filter paper soaked in wheat germ oil, which is another powerful attractant for a wide range of beetles. Once the beetles fall on this surface, they are coated in the oil, which stops their escape. The oil also coats the insects spiracles, inducing death. No messy glue.

Active Life 6 - 8 weeks. Simply replace the cartridge. Each cartridge is sealed to ensure it reaches you at peak attractiveness. The trap body is made from injection molded polypropylene in 'Food Industry' blue. Complete units or cartridges may be purchased - get what you need!



Replaceable cartridge

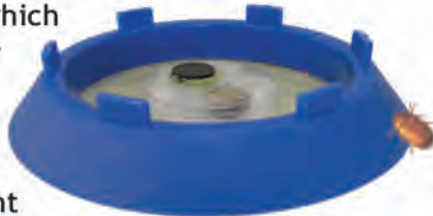
XLure® R.T.U. Beetle Floor Trap

This insect trap has been designed specifically for the effective monitoring and trapping of a wide range of STORED PRODUCT BEETLES. The design ensures that the XLure R.T.U. Beetle Floor Trap can be used in the dustiest of conditions, with no reduction in efficiency and will not spill any liquid if accidentally kicked over.

ATTRACTIVE BY DESIGN . . .

The XLure R.T.U. Beetle Floor Trap makes the best use of the powerful, combined attractiveness to stored product beetles of HARBORAGE, FOOD and PHEROMONES.

The all-around entry slots offer insects an attractive, dark harborage in which to seek shelter and the body is angled to encourage upward movement of the beetles.



Trap body



Lid only



Left photo: cross section through the XLure Beetle Floor Trap showing the narrow entry, the entry ramp, the deep trapping pit lined with oil-impregnated filter paper, the CSL food extract lure plus the yellow 'Pherogel' lure capped with a black rubber disk.



Trapping pit / Lure cartridge... can be purchased separately.

A special mix of food attractants, developed by the UK Government's Central Science Laboratory is highly attractive to a wide range of stored product beetles & their larvae and is the key attractant. Tests have shown that these include: Grain Weevils, Rice Weevils, Maize Weevils, Lesser Grain Borers, Foreign Grain Beetles, Saw Toothed Grain Beetles, Drug Store Beetles, Merchant Grain Beetles & Flour Beetles.

Also present in this trap is the long-established 'Pherogel' pheromone lure for Cigarette, Warehouse & Khapra Beetles. This is capped with a black rubber disk containing Red & Confused Flour Beetle pheromone.

In the bottom of the trapping pit lays a filter paper soaked in wheat germ oil, which is another powerful attractant for a wide range of these beetles.

Once the beetles fall on this surface, however, they get coated in the oil, which stops their escape. The oil also coats the insect's spiracles that induces death...no messy glue used!

EASE OF USE!

The X-LURE™ Beetle Floor Trap is supplied in two parts:

1. The permanent trap, made from tough, injection-molded polypropylene in 'Food Industry' blue.
2. Disposable 'lure cartridges' which are designed for up to 6 - 8 weeks use.

Each lure cartridge is sealed to ensure it reaches you at peak attractiveness. The foil seal is simply pulled off and the cartridge is pushed into position on the underside of the trap. The trap is then placed in position, close to machinery or other potential harbourages where beetles may be present.



Trapping pit/lure cartridge



The enclosed design of the trap means that it will remain effective even in the dustiest of conditions, such as in the flour covered room to the left.



INSPECTION is easy too!



Simply pull the cartridge off the bottom of the trap.

Trapped beetles are immediately visible and can be easily removed (no glue is used) for closer inspection.



The insects to the right are Confused Flour Beetles in a heavily infested factory.

After 6 - 8 weeks, the lure cartridges should be replaced with new ones.

In conclusion, the new X-LURE Multi Species Insect Trap offers PMPs:

- * Highly effective monitoring of a wide range of stored product beetles and their larvae
- * Effective in even the dustiest of conditions
- * No potential for spillage of oil
- * Easy use for the technicians