

Generic Replacement Fly Glue Boards

Generic Replacement Fly Glue Boards are multi-purpose boards to fit 90% of all the insect UV Lighted Fly Traps on the market today.

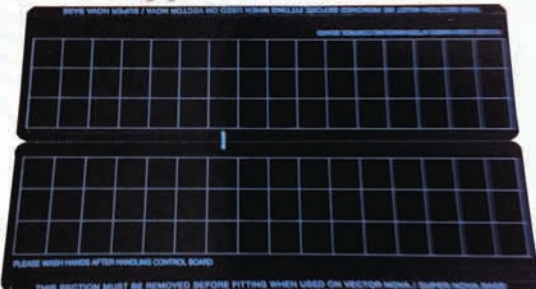
Boards are SBS 20pt black board with a polyurethane finish that results in a high quality, ultraviolet-stable fly glue board.

The polyurethane coating makes the Generic Replacement Fly Glue Boards more ridged and moisture resistant. Will not warp.

A 1" square grid pattern is printed on Generic Replacement Fly Glue Boards for ease of counting and evaluating infestation levels accurately.

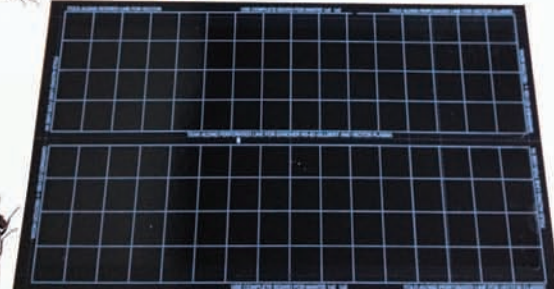


Type "A" Board



For use in:
VECTOR CLASSIC, NOVA, PLASMA, PLASMA1

Type "B" Boards



For use in:
MANTIS 1x2, MANTIS 1x3, VECTOR CLASSIC, NOVA, ECLIPSE, GILBERT 200 GT, GARDNER US-85, GARDNER GT180 SLIMLINE

High quality Replacement Fly Glue Boards for Less\$

ITEM # / DESCRIPTION	PACKAGE SIZE	TRAP SIZE
"A" Boards # 61-GFGB-A-425 # 61-GFGB-A-100	(25 pcs/bg; 4 bgs/bx - 100 pcs) (100 pcs/bx bulk) Wt: 13.8 lbs	16-1/4" x 9-1/16"
"B" Boards # 61-GFGB-B-425 # 61-GFGB-B-100	(25 pcs/bg; 4 bgs/bx - 100 pcs) (100 pcs/bx bulk) Wt: 13.8 lbs	16-11/16" x 9"